

HEBEN IN  
**2022**

wewiradirekt.de

**WEWIRA**  
WIR BAUEN KRANE

WEWIRA 20 t

WEWIRA 20 t



**HANDLING**

**EQUIPMENT**

**LASTAUFNAHME**

**KRANE**



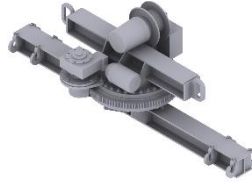
eShop

# Einsatz-Möglichkeiten von Traversen

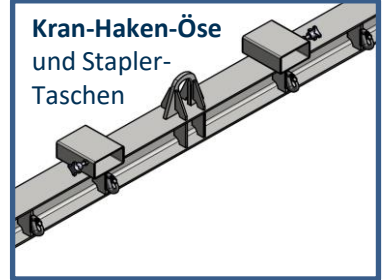
**Wirbelhaken**  
Variante A



**Drehwerk**  
elektrisch



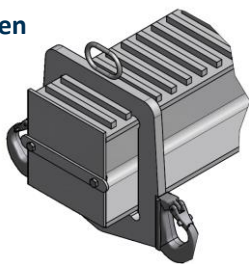
**Kran-Haken-Öse**  
und Stapler-  
Taschen



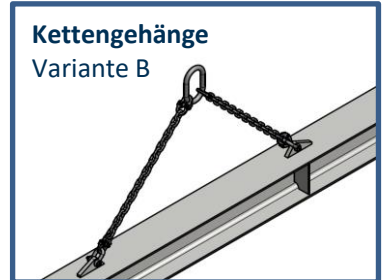
**Kran-Haken-Öse**  
Variante A



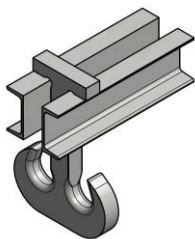
**Doppelhaken**  
Variante B



**Kettengehänge**  
Variante B



**Doppelhaken**  
Variante C



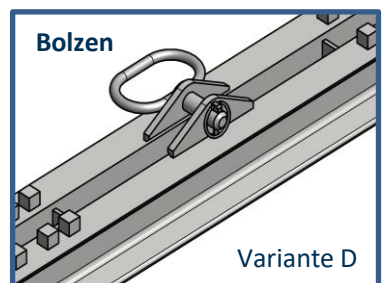
**Kran-Haken-Öse**  
Variante C



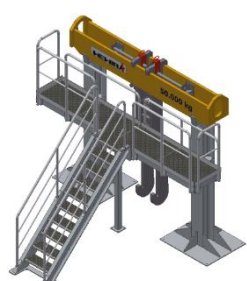
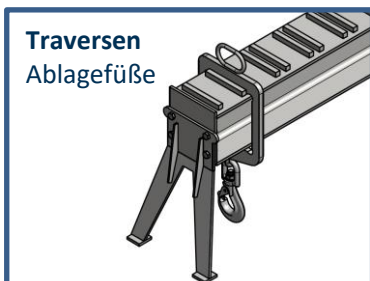
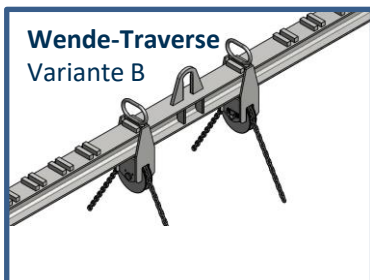
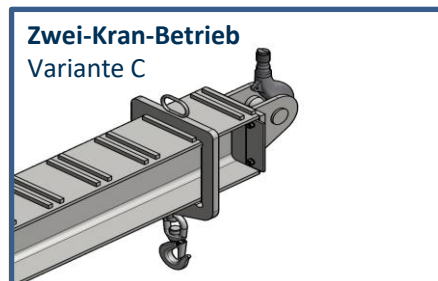
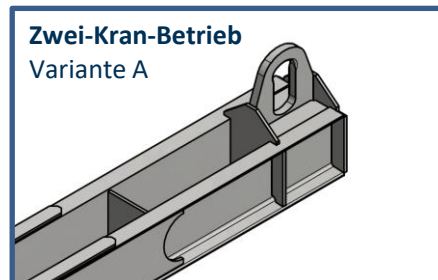
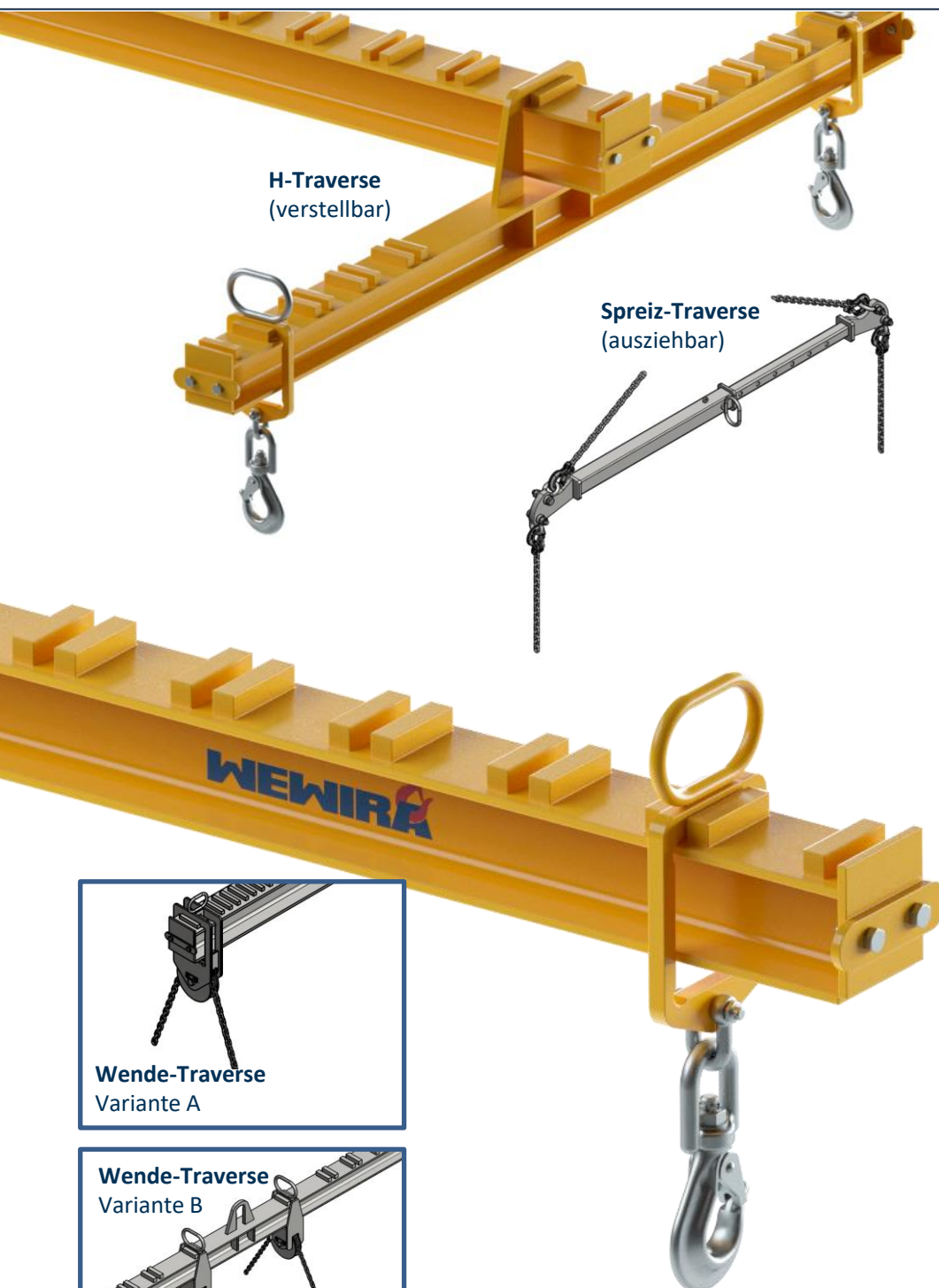
**H- Traverse**  
Variante D



**Bolzen**



Variante D



**MADE IN GERMANY**

**CE**



WEWIRA Winterhoff GmbH  
Röntgenstraße 19  
42477 Radevormwald  
Handelsregister: HRB 37707  
Registergericht: Köln  
**Vertreten durch:**  
Hans-Werner Winterhoff

Redaktion  
Pascal Winterhoff

**Kontakt**  
Telefon: 02195 9121-17  
Telefax: 02195 9121-98  
E-Mail: direkt@wewira.de

**Umsatzsteuer-ID**  
Umsatzsteuer-  
Identifikationsnummer gemäß §  
27 a Umsatzsteuergesetz:  
DE 811 276 351



# HANDLING EQUIPMENT

Ein Angebot der WEWIRA Gruppe



...jetzt Katalog digital  
unter [wewiradirekt.de](http://wewiradirekt.de)  
herunterladen und  
weitere Informationen  
unter LinkedIn finden...

Weitere Kataloge anfordern:

